



Frewen College

The Original Dyslexia Specialists



Welcome to Frewen

"We can't believe the difference in our daughter in just a few weeks. It's been absolutely phenomenal, we can't thank your staff enough."

Mr H

Principal's Welcome

One of the great privileges of my role as Principal of Frewen College is to be the regular recipient of comments such as these from parents. Typically their children are of at least average intelligence, but they have been held back and made to feel worthless because their Specific Learning Difficulties have either not been recognised, or have not been properly addressed. I am delighted to welcome you as a 'virtual visitor' and warmly encourage you to find out more about us within these pages, and by exploring our extensive website.

With over 65 years' experience behind us at Frewen, our team has immense experience in helping children with a range of educational needs centred around Specific Learning Difficulties. All our classroom staff, including Teaching Assistants, have specialist dyslexia training, and our therapists and counsellors provide additional one to one support on site.

We are delighted that our latest Ofsted Report has confirmed our previous '**Outstanding**' assessments in Boarding, with inspectors finding classroom provision 'Good with many outstanding features'. This is a great vote of confidence in the whole of our team, and especially our boarding staff, and backs up a very positive CReSTeD report, in September 2011.

If you think Frewen may be the right school for your child please phone my PA Annabel Edwards and she will book you in for our next Open Morning. I sincerely hope that we can help you, and I look forward to meeting you.

Linda Smith
Principal



Frewen College, Brickwall, Rye Road, Northiam, East Sussex TN31 6NL

Phone: 01797 252494 Fax: 01797 252567 email: office@frewencollege.co.uk

Principal: Mrs Linda Smith BA (Hons), PGCE, PGC Asp Synd; Chairman of Governors: Mr John Maudslay

DfE & CReSTeD registered; ISA, BSA, BDA corporate member. Registered charity no. 307019

www.frewencollege.co.uk



Frewen Preparatory

"It's such a wonderful thing to see him growing in confidence and actually enjoying going to school. I cannot put into words the difference Frewen has made and is making." Mother of current Year 6 pupil.

Frewen Preparatory School

Our separate Prep School currently welcomes SpLD children from age 7 up to age 11, but will extend to Year 7 in 2014 and Year 8 in 2015 via an 'Upper Prep' on the senior school site. Pupils can then transfer either to our own senior school, or to mainstream schools where appropriate. We are happy to meet children in Year 2 to start the admission process.

The Prep has its own premises across the road from the main site, and has access to many of the Seniors' specialist facilities. We also have a number of shared staff, and combine with Year 7 for choir practice and some activities. We have our own secure play area, which includes an adventure playground, and a new Lottery funded 'Sensory Produce Garden'.

All this means that our Prep pupils enjoy the benefits of a very small and nurturing environment while having access to excellent facilities and good opportunities for social interaction.

Creative Curriculum

We teach using the 'Creative Curriculum' approach to enthuse the children and stimulate an excitement about learning. We adopt one creative theme for each term and then weave all the different strands of the curriculum together rather than teaching isolated subjects. One year 6 pupil told her mother "It was great, we didn't do any work. I wrote a letter to Robin Hood and painted some leaves with words on.....". Fully engaged, the pupils work and learn without realising they are doing so.

Outings and Activities

Outings and activities are invaluable in extending learning opportunities, and the whole school is able to get involved. Recent trips have included Drusilla's Zoo Park and Michelham Priory. A wide range of on-site activities have been introduced, including archery, fencing, dance and (soon) mountain biking. Please visit our Prep website: www.frewenprep.co.uk for more information.

Jeannette Bidder
BA (Hons), PGCE
Headmistress



Well Being & Therapy



"A wide range of strategies, appropriate for developing skills for children with SpLD, is used. Children demonstrated a high level of confidence and self esteem." CReSTeD Report September 2011

Health & Well Being

We believe in a whole school, 'holistic' approach to supporting the children entrusted to us. Our policies and practices embrace children's health, social and emotional wellbeing, as well as dealing with their special educational needs and education. We have a multi-faceted team of professionals to support this approach, including Speech and Language and Occupational Therapists, Physiotherapist, School Counsellor, and School Matron.

Healthy Bodies

We fully recognise the importance of exercise and healthy eating in helping to create a positive environment for learning. Our catering team is regularly assessed as 'outstanding' by Ofsted, offering an excellent range of hot and cold menu options, all cooked in-house. We use locally sourced ingredients wherever possible including many home-grown vegetables. We have 60 acres of playing fields and grounds providing a full range of sports options including rugby, soccer, cricket, netball, swimming, tennis, orienteering, archery, mountain biking and rounders as well as a range of indoor activities. We also have a newly refurbished fitness centre.

Therapies

We have an extremely experienced and wide ranging team of well qualified professionals to address all the principal needs of our pupils. One of our Speech and Language Therapists has additional training in Audio Therapy, and our Physiotherapist can deliver Sensory Integration Therapy. We are also fortunate to have a fully qualified and experienced counsellor trained in mentoring young people in need of one-to-one support. Our pupils have access to small group or individual sessions with these specialists as required. Staff also lead groups to support the development of good practice and understanding.

We have a very active parent support group, set up by and for parents and supported by staff, to help guide others through the maze surrounding statementing and funding, or just to help each other through difficult times with their children.

Our team of professionals is led by our extremely experienced SENCO Catherine Bellerby who has recently joined us after many years as Head of Learning Support at a local school.

English & Literacy



"She has been totally transformed and now blooms with self confidence. She achieved excellent GCSE results and is now really enjoying college." Mrs O

English Department

English and Literacy are at the core of all our work at Frewen. Our most important responsibility is to remove the fear of the written and spoken word and give our pupils the skills and the confidence to read and write competently. In the brilliantly eloquent words of a recent leaver:

"When diagnosed with severe dyslexia, the prospect of confronting this condition can be daunting to the best of us. Frewen College helped me when no other school would. Before Frewen I couldn't read and I had very poor communication skills both written and linguistically. But due to Frewen's excellent teachers and speech therapists I have been given the gift of literacy. I now embark to Keele University to read History and Politics. None of this would have been possible without Frewen or my parents." Ben B

Our most recent CReSTeD Inspection, in September 2011, reported:

"The College has some excellent whole school strategies for developing functional skills. These include a daily individual reading session supported by the vast majority of staff, and the use of phonic desktop charts and wall posters in all teaching areas to aid spelling."

E-Library and Reading Resource Room

Our Reading Resource Room is packed with books, computers and an interactive screen, with books graded by subject and reader ability. Students are encouraged to take books home to read, and we are always happy to help parents learn how best to support their child's reading at home. The recent introduction of an e-library, to complement our more traditional reading resources, has been a great hit, particularly with the less confident pupils. The fully interactive programmes combine the written word with sounds and pictures to bring literature to life. Our thanks go to our generous benefactor for this gift. This combination of traditional and modern resources has created a real 'buzz' around reading.

Software support

Students have access to a wide range of modern software programmes to help develop their literacy skills including Dragon Naturally Speaking, WriteOnLine, and Clicker 5. These modern aids all help build confidence and enthusiasm for the written word.

Art & Design

"When he started at Frewen he had very low self-esteem. Over the time he has been at the school I have seen a gradual and miraculous change." Mrs C

Art & Design

Art is an area in which the positive aspects of dyslexia can shine through. At Frewen we have an outstanding Art Department that encourages self-expression and confidence. Through celebrating experimentation and creativity, students learn not to fear failure but to see it as a step towards future success.

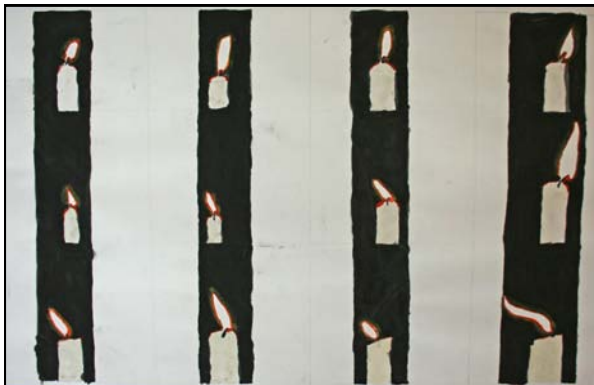
Basic skills are developed in the early years by mixing original work with copying increasingly complex drawings. As they grow in confidence, students are encouraged to think about and explain the creative process and by developing their interest they willingly take on the dual challenge of tackling increasingly mature projects while writing ever more complex explanations of their work.

As a result students regularly achieve A* and A grade GCSE passes, and each year several go on to Art courses at Further Education College.

Photography

Currently taught as part of the Art & Design course, photography is increasingly popular and students' work is ever more innovative and mature. Increasing numbers of our students secure places on College courses to study photography.

"I commend you for the brilliant schooling you provide for the otherwise 'forgotten' children. It is truly remarkable." Mrs A.





Outdoor Activities

"Richard seems to be having a wonderful time with you..... In fact the changes we and our family have observed in him have been nothing short of miraculous." Cpl & Mrs G

Outdoor Activities

Outdoor activities contribute a great deal of what makes Frewen so special. Our facilities are the envy of many larger schools, indeed we now host a wide range of regional sports fixtures for mainstream as well as special needs schools. In many sports our pupils compete with mainstream schools on equal terms, greatly contributing to the enhancement of their self confidence. In 2013 our first Outdoor Activities GCSE cohort did extremely well including passes at A and B grades.

While we strongly encourage all pupils to get involved, we also understand that there can be very good reasons why some children, particularly those with sensory integration issues, find this difficult. We ensure suitable alternative activities are available so that these pupils feel included.

Encouraging regular involvement in physical activity is also an important element in developing a healthy lifestyle, and complements our work in Food and Nutrition and PSHE.

Games & Sports

We offer a very full range of games and sports, and our facilities include a large swimming pool, rugby, cricket and soccer pitches that we also make available to other local clubs, tennis and netball court, five-a-side hard court, and grass athletics track. We have regular fixtures against other schools, resulting in a steady improvement in results and confidence. Our pupils helped design our popular new mountain bike trail

Duke of Edinburgh Awards

All Year 9 pupils are strongly encouraged to pursue the DoE Bronze Award, and can then move on to the Silver Award. We find these extremely helpful in building self reliance and confidence for the future. With access to 100 acres of ancient deer park as well as our own extensive grounds for camping and orienteering, pupils can build up their skills in a completely safe environment.



Boarding at Frewen

"Overall effectiveness:

Outcomes for residential pupils:

Quality of residential provision and care:

Residential pupils' safety:

Leadership and management:

Outstanding

Outstanding

Outstanding

Outstanding

Outstanding"

Ofsted residential inspection September 2011

Boarding and Safeguarding at Frewen

Our very experienced boarding team tries to make boarding life as homely as possible. We believe our boarders have a right to feel completely safe, to be respected, and to have fun, within a clearly defined structure. They learn to respect each other and to develop social skills that many have previously lacked, but we also understand the need for privacy and contact with home. Boarders have access to private landlines and Skype if they wish to make private calls home. We regularly review our safeguarding procedures and reinforce staff training in this all-important area.

Boarding is fully flexible, and we make no additional charge for weekend boarding. About half our boarders now stay at the weekends. We accept boarders from age 7, in line with day admissions. Boys are divided into senior and junior houses, each having both a common room (equipped with large plasma screen TVs) and a quiet room. We encourage boarders to personalise their rooms and nearly all are en suite, with a maximum of four beds in junior bedrooms, and two in the senior house.

Girls' Boarding

Girls' boarding was only introduced in 2009, and has proved so popular that we have already built two extensions! Located in a comfortable modern house (previously the Head's house), it has its own private garden, and facilities that at least match the boys'. The girls join in with the boys for most meals and many activities, but have their own common rooms. Our young Canadian Housemistress is extremely popular with all the girls.

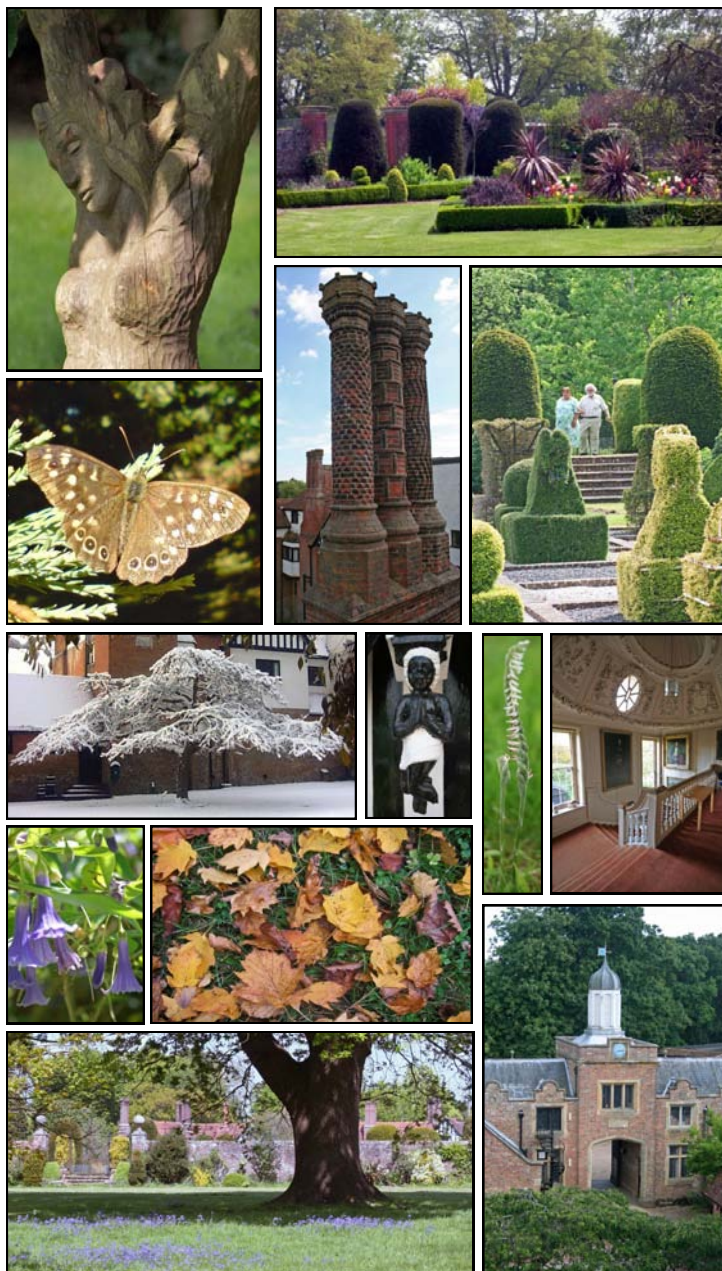
Activities

Many of our day pupils envy the range of activities we provide for our boarders. Boarders can watch or participate in a wide range of sports, music, arts and crafts. Popular pastimes include trips to the cinema or theatre, water sports, banger racing and mountain biking. For the less active we have a dedicated Playstation room, computers, board games, TVs....

Bed & Board

Our catering is unrivalled, in fact a recent Ofsted inspector said that in her 12 years' experience it was the first time no-one at all had complained about the food! Both catering and cleaning are in-house, and our kitchens use locally produced ingredients wherever possible, including increasing quantities from our own gardens. We cater for a wide range of specialist diets, and staff help boarders to make healthy choices. **Ofsted's verdict: "Plentiful supply and excellent quality!"**





Admissions

"He has thrived at Frewen and been happier in the past 9 months than I have ever known him. His confidence and self-esteem have improved considerably" Mrs J.

Who do we admit?

We currently teach boys and girls aged from 7 to 17, but we do not admit new pupils into Year 11, nor usually Year 10 after the first half term as it is too disruptive to others. We prefer early years admissions as that gives us the best opportunity to make the biggest difference. We welcome day and boarding pupils, and boarding is fully flexible. From **September 2014** we will be introducing a Sixth Form and will consider appropriate admissions post GCSE. Please note that availability is very limited in some year groups.

We welcome international students, provided that English is their first or strong second language. Currently we have pupils from Malaysia, Egypt, the Maldives, Hong Kong, and Continental Europe, as well as Armed Forces children with UK and overseas based parents.

Special Educational Needs

The great majority of our pupils have Specific Learning Difficulties, principally Dyslexia and/ or Dyspraxia, together with some Dyscalculia. We also cater for Speech and Language and Sensory Integration disorders. We admit a small number of children with Asperger's or High Functioning ASD provided that their primary need is a literacy based SpLD. We only admit children we consider will fit into and benefit from our school community. We do not admit children with Emotional Behavioural or Social Disorders. Please ask the Office for a copy of our Accessibility Policy if your child has physical disabilities.

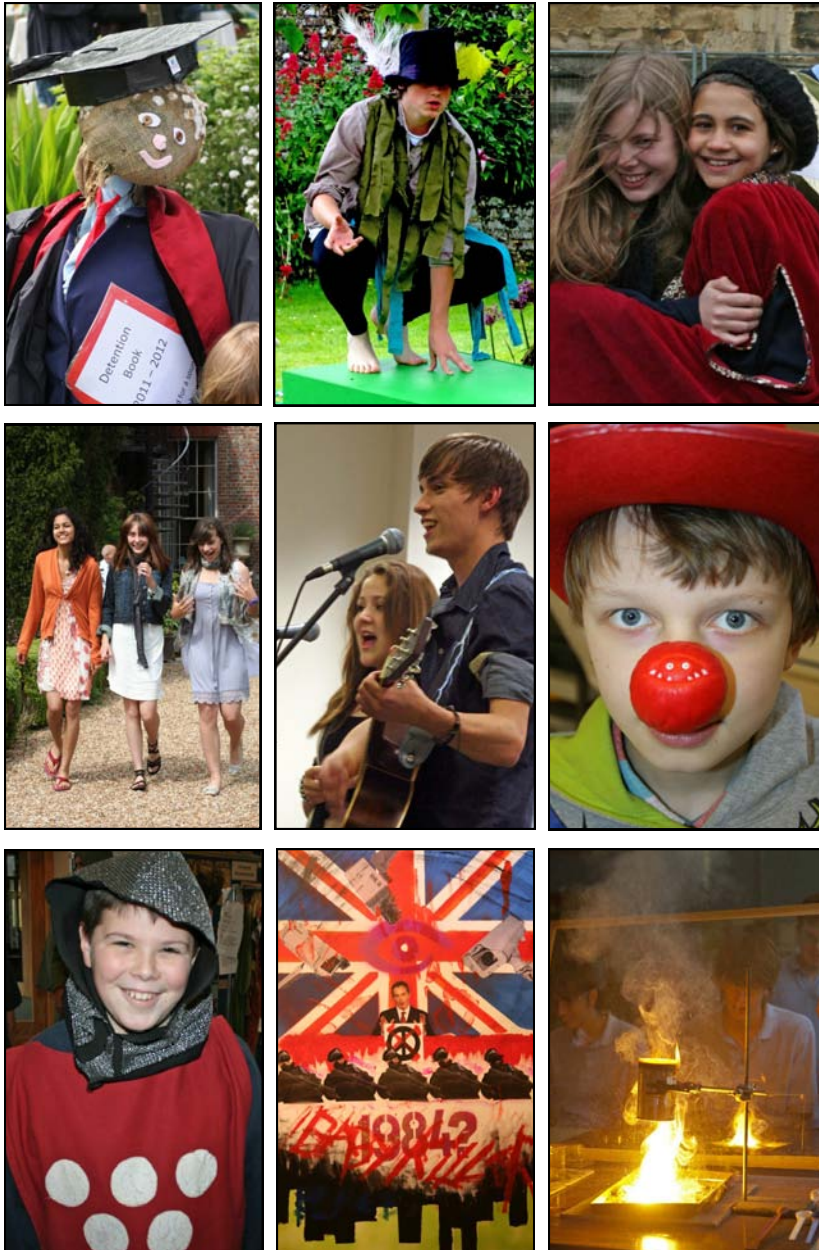
How do Admissions work?

We encourage prospective parents initially to attend one of our regular Open Mornings to meet some of the key staff and see the school, usually guided by some of our pupils (please see the website for dates). We prefer not to get into too much detailed discussion at this stage but if you are travelling from a considerable distance please ask the Secretary to book you extra time. If after a meeting with the Principal or SENCo it is decided to take matters further, we will ask to see a recent Educational Psychologist's Report and any other relevant reports.

If after studying the paperwork we agree that we may be able to help your child, they will be invited to attend for Evaluation and Assessment, usually comprising two school days for day pupils, or three days with two overnight stays for boarders. We will normally be able to let you know within 48 hours of completion whether we will be offering a place. Provided that funding is available, new pupils can start straight away, or at an agreed later date.

School Policies

The following policies are available as pdf downloads from the school website or may be obtained from the school office: Accessibility; Anti-bullying; Behaviour Discipline & Rewards; Complaints; Curriculum; Safeguarding.



Frewen Fees

"Without the wonderful, dedicated help the boys received at Frewen Juniors I am sure they would have stayed demoralised and disheartened, with no confidence to attempt to reach their potential. Sending them to Frewen College was a very hard decision, but one we do not regret." J&S H

Fees and Charges 2013/2014

Initial charges:

- Non-refundable registration fee: **£150**
- Refundable deposit (UK & HM Forces): **£100**
- Refundable overseas & non-UK national deposit: **£1,500**

Termly Fees:	Day	Weekly Boarding	Full Boarding
Prep Years 3-6	4690	7223	7223
Middle Years 7-9	6528	9261	9261
Senior Years 10-11	7470	10370	10370

All deposits are repaid on leaving, less any outstanding extras.

Extras: Our basic fees include all activities considered to be part of the school curriculum including materials for Food and Nutrition, Design and Technology, and Art. Parents will be charged for special trips at cost. Fees for external examinations are chargeable at cost.

Therapy: Additional fees are charged for weekly one to one therapy delivered by a qualified therapist or small group work under the direction of a therapist. The current charge is **£480** per term for each weekly 1:1 session required, and **£125** per term for small group sessions.

Music: Music lessons (including drums) are charged at **£150** per term.

Boarding: Boarding fees include all activities unless advised in advance. No extra charge is made for full boarding. Pocket money of **£5pw** is charged to parents.

Help with Fees

Bursary Scheme: The school operates a means tested bursary scheme that can cover part of the fees. Please contact the Business Manager for details.

Local Authority Funding: Over half our pupils are statemented and funded by their Local Authority. Obtaining funding can be a lengthy process, and our SENCO and Principal can offer you guidance on request.

The Frewen Team 2013/14

NB: due to space constraints here, please see the website for a comprehensive list.

Principal

*+Linda Smith BA (Hons), PGCE, PGC AspSynd
Designated Senior Person for Child Protection; Religious Studies

Business Manager & Bursar

*Jeremy Field BA (Hons), FCIB, ISBA

Deputy Head

*Nick Oddy BEd (Hons), MA, AMBDA

SENCo

+Catherine Bellerby BEd (Hons Cantab)

Senior School

English Department

Sally Welch BA (Hons), Dip SpLD
Leon Claasen BA (Hons), HDE, OCN Level 3
Linda Stevens BA (Hons), MA, AMBDA
Stephanie White DPP, Dip.SpLD, ALSA, MBCAN

Head of Careers; Mathematics

Head of English & Literacy
English
English
English

Maths Department

+Graeme Rawlings BA (Hons), PGCE
Charlene Claasen Dip HE/ DipEd, OCN Level 3

Head of Mathematics
Mathematics

Art & Design

Clive Garland BA (Hons), MA, OCN Level 3
Rebecca Forbes-Gower
BEd(Hons), PGCE SpLD, AMBDA
Mary Garland BA (Hons), HND, ALSA

Head of Art & Design
Head of Design &
Technology
Art Technician & TA

Science & Technology

+Chris Hogan BSc (Hons), PGCE, OCN Level 3
Cathy Elliott CertEd, OCN Level 3
Lesley Hayden CertEd, OCN Level 3

Head of Science
Head of ICT Department
Head of Food & Nutrition

Scott Wassell BSc (Hons), PGCE

Adam Baxter

Performing Arts

Anne Whiteman BEd (Hons), ALCM, OCN Level 3
Adam Brackenborough Nat Dip Musical Theatre
Katie Buckland BA (Hons), PGCE
Ian Barnett
Peter Fields ARCM

Science
Network Manager; ICT

Head of Music
Drama & Dance
Drama
Music (Guitar & Drums)
Music (Piano & Violin)

Humanities

+Graeme Rawlings BA (Hons), PGCE
Hazel Lawrence BA (Hons), PGCE
Amanda Glubb BA (Hons), PGCE, PGDip CIM

Head of Humanities
History & Geography
ASDAN, Media Studies

Outdoor Activities

+Richard Sage, Cert Ed, Cert PPBE
Paul Fitzsimmons, BEd (Hons)

Sports Co-ordinator
Head of Outdoor Ed; Science;
DoE Award Instructor
Outdoor activities

Chris Hogan BSc (Hons), PGCE, OCN Level 3

Careers Unit

*Nick Oddy, BEd, MA, AMBDA
Robin Andrews BSc (Hons), DipCG

Head of Careers
Careers & Work Experience Adviser

Frewen Preparatory School

Headmistress

Jeannette Bidder BA (Hons), PGCE

Jane Sharley BEd (Hons), OCN Level 3
Suzanne Neate BA (JtHons), PGCE(Dist),
Dip SpLD(Dist), AMBDA, MCot

KS2 Teacher
KS2 Teacher

#Richard Sage Cert.Ed, Cert PPBE

PE/Games

Anne Whiteman BEd (Hons), ALCM, OCN Level 3

Music, Choir



The Frewen Team 2013/14 *(Cont.)*

Therapy, Mentoring & Specialist Support

Therapy & Wellbeing

Bethany Driver MSc, CCC-SLP, OCN Level 3	Speech & Language Therapy
Nicki Foster BSc (Hons)	Occupational Therapy
Valerie Wood BSc (Hons)	Sensory Integration, Physiotherapy
Amanda Banks BSc (Hons)	Speech & Language Therapy
Karen Rawlings BA (Hons), PGCE, PGC SpLD (Dyslexia), AMBDA, NQFS	Teacher of Speech & Language
Melanye Richmond BSc (Hons)	Occupational Therapy
Jane Sage Cert Ed, AMBDA	Johansen IAS Therapy
Stephanie White	Senior Counsellor
DPP, Dip.SpLD, ALSA, DipCP, MBACP	

Boarding & Care

Boarding House

Jane Sage CertEd, AMBDA	Head of Boarding;
+Richard Sage CertEd, Cert PPBE	Head of Boarding; Games
Chris Moverly	Housemaster
Chantal Dube	Housemistress
Rachel Woodgate	Asst Housemistress
Rowena Curchod	Boarding Assistant

Nursing Staff

Claudia Allsopp PhD, BSc (Hons), ALSA	Matron
---------------------------------------	--------

School Doctor

Dr James MB BS, MRCGP	Doctor (Northiam GP)
-----------------------	----------------------

The Support Team

Administration

Annabel Edwards	Principal's PA & School Secretary
Jenny Ritchie AAT	Assistant Bursar
Margaret Carr	Examinations Officer & Admin Assistant
Jackie Garner	Finance Assistant
Stephanie Stockton	Annual Reviews

Maintenance

Peter Dunk	Head of Maintenance
------------	---------------------

Gardens & Grounds

Darren Holmes	Gardener
---------------	----------

Catering

Heather Wareham	Catering Manager
-----------------	------------------

Housekeeping

Caroline Ripley	Head of Housekeeping
-----------------	----------------------

*Members of Senior Leadership Team; +Members of Middle Management Group

Abbreviations:

Dip.SpLD: Diploma in Specific Learning Difficulties (Dyslexia).

AMBDA: Associate Member of the British Dyslexia Association; ** indicates qualification in progress

ALSA: Accredited Learning Support Assistant (AWARDS: Dyslexia Institute Certificate, Dyslexia & Literacy in the Classroom, Surrey Open College Network Certificate)

